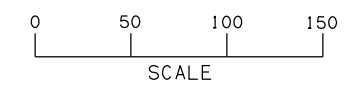


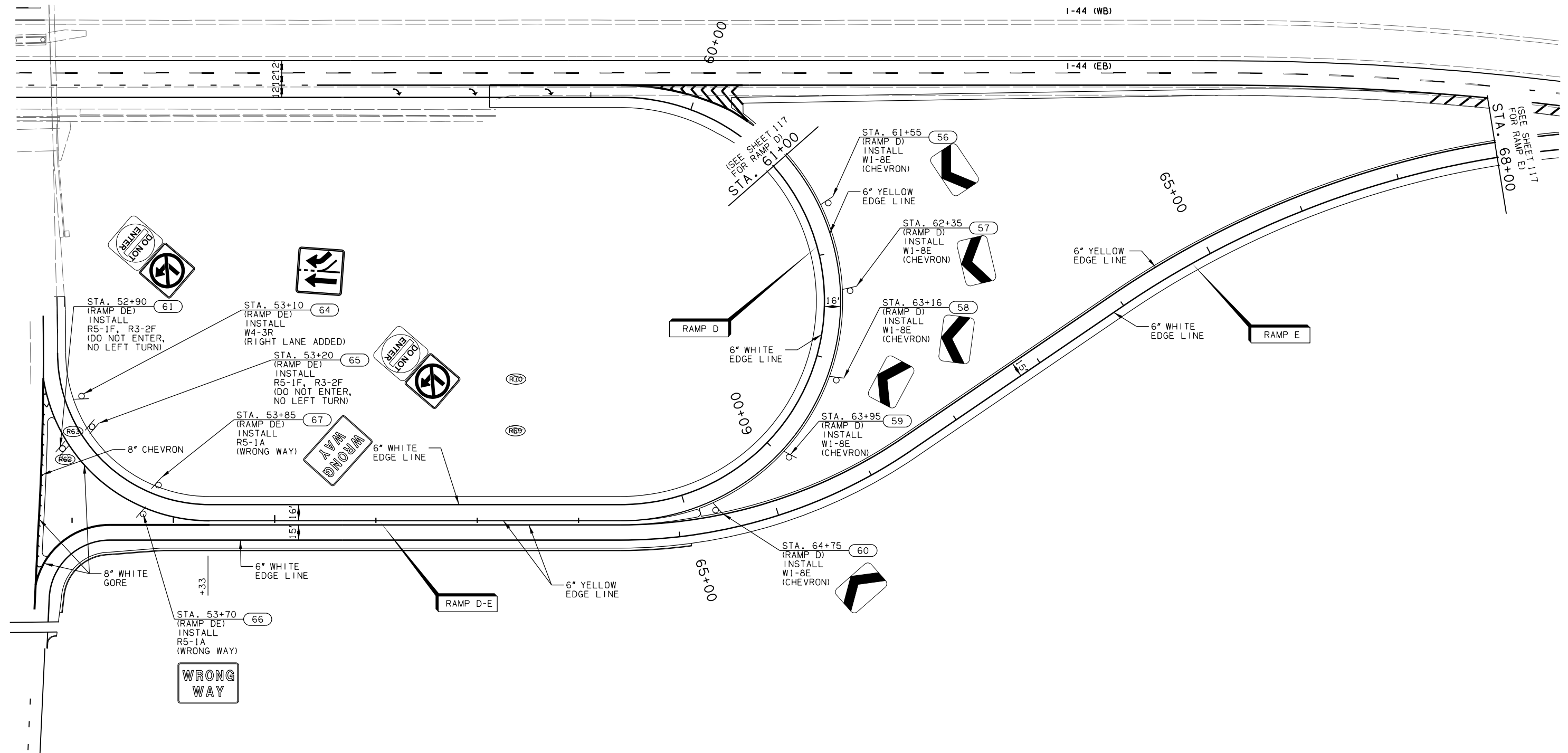
| FED. ROAD DIST. NO. | STATE | JOB PIECE NO. | FISCAL YEAR | SHEET NO. | TOTAL SHEETS |
|---------------------|-------|---------------|-------------|-----------|--------------|
| 6 | OKLA. | 27050(04) | 2017 | | |
| DESCRIPTION | | | REVISIONS | | DATE |



| LEGEND | |
|--------|-------------------------------|
| | TRAFFIC SIGN |
| | REMOVE SIGN |
| | SAND FILLED IMPACT ATTENUATOR |

- NOTES:
1. ALL MAINLINE STRIPING SHALL BE THE APPROPRIATE COLOR OF EPOXY STRIPE WITH SHADOW STRIPING TO BE PAID FOR AS 856(A) TRAFFIC STRIPE (MULTIPOLYMER). ALL STRIPING SHALL BE MULTIPOLYMER UNLESS OTHERWISE NOTED.
 2. ALL STRIPING SHALL MEET EXISTING STRIPING AT PROJECT TERMINAL POINTS.
 3. SEE ODOT STANDARD DRAWINGS FOR ADDITIONAL DETAILS.
 4. SEE SHEETS 124-134 FOR SPECIAL SIGN DETAILS.
 5. SEE SHEET 135 FOR OVERHEAD SIGN STRUCTURE DETAILS.
 6. SEE SHEET 123 FOR ROUTE ASSEMBLIES.

FOR DIMENSIONS NOT SHOWN ON THE PLANS FOR PAVEMENT MARKINGS SEE O.D.O.T. STANDARD DRAWING: PM3-1.



RAMP D, E, & D-E

| | | |
|----------|--------|------|
| DESIGN | RBH | 9/13 |
| DRAWN | BWH | 9/13 |
| CHECKED | JES | 5/16 |
| APPROVED | | |
| SQUAD | GARVER | |

I-44 & US-62 INTERCHANGE
 SIGNING AND STRIPING PLANS
 (SHEET 6 OF 8)
 STATE JOB NO. 27050(04) SHEET NO. 120